

# C60H circuit-breakers

## B, C and D curves

IEC 898: 10000 A, IEC 947-2: 15 kA

### functions

The circuit-breakers combine the following functions:

- protection of circuits against short-circuit currents,
- protection of circuits against overload currents,
- control,

- isolation,
- protection of persons against indirect contact with TN and IT neutral systems. C60H circuit-breakers are used in the tertiary and industrial sectors

### description

#### technical data common to C60H circuit-breakers

- power circuit
- voltage rating: 440 V AC
- breaking capacity
- according to IEC 898, Icn ultimate breaking capacity (O-CO cycle):

rating (A)	type	voltage (V)	breaking capacity Icn (A)
0.5...63	<b>1P</b>	230...400	10 000
	<b>2P, 3P, 4P</b>	400...415	10 000

rating (A)	type	voltage (V)	breaking capacity Icu (kA)
0.5...63	<b>1P</b>	130	30
	<b>2P, 3P, 4P</b>	240	15
		415	4 (1)
		240	30
		415	15
		440	10

Ics = 75 % of Icn  
- according to IEC 947-2, Icu ultimate breaking capacity (O-CO cycle):

rating (A)	type	voltage (V)	breaking capacity Icu (kA)
0.5...63	<b>1P</b>	130	30
	<b>2P, 3P, 4P</b>	240	15
		415	4 (1)
		240	30
		415	15
		440	10

- (1) breaking capacity under 1 pole with IT isolated neutral system (case of double fault).
- limitation class (EN 60898): 3
- fast closing: allows the high inrush currents of some loads to be better held
- isolation with positive break indication: opening is indicated by a green strip on the device operating handle. This indicator shows opening of all the poles
- number of cycles (O-C): 20 000
- environment
- tropicalisation: treatment 2 (relative humidity: 95 % at 55 °C)
- weight (g):

type	1P	2P	3P	4P
	120	240	360	480

- connection: tunnel terminals for the following cables:
  - 16 mm<sup>2</sup> flexible or 25 mm<sup>2</sup> rigid up to 25 A ratings
  - 25 mm<sup>2</sup> flexible or 35 mm<sup>2</sup> rigid for 32 to 63 A ratings.

#### B curve

**utilisation**  
when the short-circuit currents are weak (generators, long cables).

#### technical data

- power circuit
- ratings: 6 to 63 A set at 30 °C
- tripping curve: the magnetic trip units operate between 3 and 5 In.

#### C curve

**utilisation**  
cables feeding conventional loads.

#### technical data

- power circuit
- ratings: 0.5 to 63 A set at 30 °C
- tripping curve: the magnetic trip units operate between 5 and 10 In.

#### D curve

**utilisation**  
loads with high inrush currents (motors, transformers).

#### technical data

- power circuit
- ratings: 0.5 to 63 A set at 30 °C
- tripping curve: the magnetic trip units operate between 10 and 14 In.

### catalogue numbers



24699

type	rating (A)	catalogue number	width in mod. of 9 mm	quantity per batch
<b>B curve C60H</b>				
<b>1P</b>	6	<b>24699</b>	2	12
	10	<b>24700</b>	2	12
	13	<b>24395</b>	2	12
	16	<b>24701</b>	2	12
	20	<b>24702</b>	2	12
	25	<b>24703</b>	2	12
	32	<b>24704</b>	2	12
	40	<b>24705</b>	2	12
	50	<b>24706</b>	2	12
	63	<b>24707</b>	2	12

# C60H circuit-breakers

B, C and D curves

IEC 898: 10000 A, IEC 947-2: 15 kA

## catalogue numbers



26030

type	rating (A)	catalogue number	width in mod. of 9 mm	quantity per batch
------	------------	------------------	-----------------------	--------------------

### B curve C60H (continued)

1P+N	rating (A)	catalogue number	width in mod. of 9 mm	quantity per batch
	2	26019	4	6
	3	26020	4	6
	4	26022	4	6
	6	26023	4	6
	10	26025	4	6
	13	26026	4	6
	16	26028	4	6
	20	26029	4	6
	25	26030	4	6
	32	26031	4	6
	40	26032	4	6
	50	26035	4	6
	63	26036	4	6



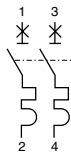
24729

2P	rating (A)	catalogue number	width in mod. of 9 mm	quantity per batch
	6	24725	4	6
	10	24726	4	6
	13	24721	4	6
	16	24727	4	6
	20	24728	4	6
	25	24729	4	6
	32	24730	4	6
	40	24731	4	6
	50	24732	4	6
	63	24733	4	6



24742

3P	rating (A)	catalogue number	width in mod. of 9 mm	quantity per batch
	6	24738	6	4
	10	24739	6	4
	13	24734	6	4
	16	24740	6	4
	20	24741	6	4
	25	24742	6	4
	32	24743	6	4
	40	24744	6	4
	50	24745	6	4
	63	24746	6	4



26067

3P+N	rating (A)	catalogue number	width in mod. of 9 mm	quantity per batch
	1	26055	4	3
	2	26056	4	3
	3	26057	4	3
	4	26059	4	3
	6	26060	4	3
	10	26061	4	3
	13	26062	4	3
	16	26063	4	3
	20	26065	4	3
	25	26066	4	3
	32	26067	4	3
	40	26068	4	3
	50	26069	4	3
	63	26070	4	3



24756

4P	rating (A)	catalogue number	width in mod. of 9 mm	quantity per batch
	6	24751	8	3
	10	24752	8	3
	13	24747	8	3
	16	24753	8	3
	20	24754	8	3
	25	24755	8	3
	32	24756	8	3
	40	24757	8	3
	50	24758	8	3
	63	24759	8	3



# C60H circuit-breakers

B, C and D curves

IEC 898: 10000 A, IEC 947-2: 15 kA


## catalogue numbers



24959


type	rating (A)	catalogue number	width in mod. of 9 mm	quantity per batch
------	------------	------------------	-----------------------	--------------------

### C curve C60H (continued)

type	rating (A)	catalogue number	width in mod. of 9 mm	quantity per batch
1P 	0.5	24900	2	12
	0.75	24901	2	12
	1	24955	2	12
	2	24956	2	12
	3	24957	2	12
	4	24958	2	12
	6	24959	2	12
	10	24960	2	12
	13	24891	2	12
	16	24961	2	12
	20	24962	2	12
	25	24963	2	12
	32	24964	2	12
	40	24965	2	12
	50	24966	2	12
63	24967	2	12	




26048

type	rating (A)	catalogue number	width in mod. of 9 mm	quantity per batch
1P+N 	1	26037	4	6
	2	26039	4	6
	3	26039	4	6
	4	26041	4	6
	6	26042	4	6
	10	26044	4	6
	13	26045	4	6
	16	26047	4	6
	20	26048	4	6
	25	26049	4	6
	32	26050	4	6
	40	26051	4	6
	50	26053	4	6
	63	26054	4	6

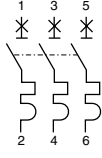


24988

type	rating (A)	catalogue number	width in mod. of 9 mm	quantity per batch
2P 	0.5	24902	4	6
	0.75	24903	4	6
	1	24981	4	6
	2	24982	4	6
	3	24983	4	6
	4	24984	4	6
	6	24985	4	6
	10	24986	4	6
	13	24919	4	6
	16	24987	4	6
	20	24988	4	6
	25	24989	4	6
	32	24990	4	6
	40	24991	4	6
	50	24992	4	6
	63	24993	4	6



25002

type	rating (A)	catalogue number	width in mod. of 9 mm	quantity per batch
3P 	0.5	24906	6	4
	0.75	24907	6	4
	1	24994	6	4
	2	24995	6	4
	3	24996	6	4
	4	24997	6	4
	6	24998	6	4
	10	24999	6	4
	13	24933	6	4
	16	25000	6	4
	20	25001	6	4
	25	25002	6	4
	32	25003	6	4
	40	25004	6	4
	50	25005	6	4
	63	25006	6	4

# C60H circuit-breakers

B, C and D curves

IEC 898: **10000A**, IEC 947-2: 15 kA

## catalogue numbers

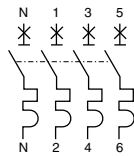


26085

type	rating (A)	catalogue number	width in mod. of 9 mm	quantity per batch
------	------------	------------------	-----------------------	--------------------

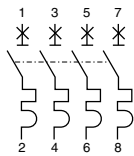
### C curve C60H (continued)

3P+N	rating (A)	catalogue number	width in mod. of 9 mm	quantity per batch
	1	26073	8	3
	2	26074	8	3
	3	26075	8	3
	4	26076	8	3
	6	26077	8	3
	10	26079	8	3
	13	26080	8	3
	16	26081	8	3
	20	26082	8	3
	25	26083	8	3
	32	26085	8	3
	40	26086	8	3
	50	26087	8	3
	63	26088	8	3



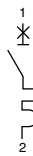
25016

4P	rating (A)	catalogue number	width in mod. of 9 mm	quantity per batch
	0.5	24908	8	3
	0.75	24909	8	3
	1	25007	8	3
	2	25008	8	3
	3	25009	8	3
	4	25010	8	3
	6	25011	8	3
	10	25012	8	3
	13	24947	8	3
	16	25013	8	3
	20	25014	8	3
	25	25015	8	3
	32	25016	8	3
	40	25017	8	3
	50	25018	8	3
	63	25019	8	3



25159

1P	rating (A)	catalogue number	width in mod. of 9 mm	quantity per batch
	0.5	25171	2	12
	1	25152	2	12
	2	25155	2	12
	3	25157	2	12
	4	25158	2	12
	6	25159	2	12
	10	25160	2	12
	16	25161	2	12
	20	25164	2	12
	25	25165	2	12
	32	25166	2	12
	40	25167	2	12
	50	25168	2	12
	63	25169	2	12



25191

2P	rating (A)	catalogue number	width in mod. of 9 mm	quantity per batch
	0.5	25172	4	6
	1	25183	4	6
	2	25184	4	6
	3	25185	4	6
	4	25186	4	6
	6	25187	4	6
	10	25188	4	6
	16	25189	4	6
	20	25190	4	6
	25	25191	4	6
	32	25192	4	6
	40	25193	4	6
	50	25194	4	6
	63	25195	4	6



# C60H circuit-breakers

## B, C and D curves

IEC 898: 10000A, IEC 947-2: 15 kA

### catalogue numbers



25205



25219

type	rating (A)	catalogue number	width in mod. of 9 mm	quantity per batch
------	------------	------------------	-----------------------	--------------------

#### D curve C60H (continued)

3P	rating (A)	catalogue number	width in mod. of 9 mm	quantity per batch
	0.5	25173	6	4
	1	25196	6	4
	2	25197	6	4
	3	25198	6	4
	4	25199	6	4
	6	25200	6	4
	10	25201	6	4
	16	25202	6	4
	20	25203	6	4
	25	25205	6	4
	32	25207	6	4
	40	25208	6	4
	50	25209	6	4
	63	25210	6	4

4P	rating (A)	catalogue number	width in mod. of 9 mm	quantity per batch
	0.5	25174	8	3
	1	25211	8	3
	2	25212	8	3
	3	25213	8	3
	4	25214	8	3
	6	25215	8	3
	10	25216	8	3
	16	25217	8	3
	20	25218	8	3
	25	25219	8	3
	32	25220	8	3
	40	25221	8	3
	50	25222	8	3
	63	25223	8	3

### additional information

Vigi modules: page 90115/2  
 electrical auxiliaries: page 90142/2  
 accessories: page 91903/2  
 dimensions: page 90148/2

curves: page 90180/2